

## RAW Viewer

Installation Guide

Software Version 5.0

RWV-10

## Table of Contents

Hardware Requirements .....	3
Recommended environments.....	3
Mac OS .....	3
Windows .....	3
Display .....	3
Storage.....	3
Installation .....	4
Mac OS.....	4
Windows.....	6
Launching and Exiting the Application .....	9
Launching the application.....	9
Mac OS .....	9
Windows .....	9
Exiting the application .....	10
Mac OS .....	10
Windows .....	10
Trademarks.....	11

# Hardware Requirements

## Recommended environments

---

### Mac OS

OS: macOS Monterey (12) / Ventura (13) / Sonoma (14) 64-bit

HDD: More than 500 MBytes free space

CPU: Intel Core i7, Xeon (Nehalem and later)

Memory: 6 GB or more

GPU: AMD Radeon HD 5000 series and later

NVIDIA GeForce GT750M series and later

Model: Mac Pro Late 2013, iMac Mid 2014, MacBook Pro Late 2013, and later

### Windows

OS: Windows 10 2022 Update (22H2),

Windows 11 2022 Update (22H2), 2023 Update (23H2)

HDD: More than 500 MBytes free space

CPU: Intel Core i7, Xeon (Nehalem and later)

Memory: 6 GB or more

GPU: AMD Radeon HD 7000 series and later

NVIDIA GeForce 500 series and later

### Display

Resolution: 1920×1200 or higher

Size: 27 inch or larger



Note: In a multi-display environment, this application does not support switching your primary and secondary screen while running.

### Storage

High speed RAID: (e.g. Thunderbolt RAID, 500MB/sec or faster RAID storage)

# Installation

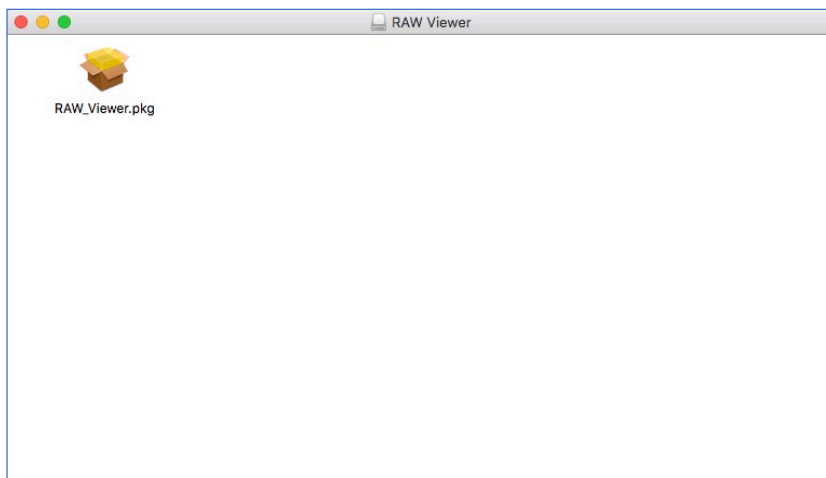


Note: If a previous version of RAW Viewer is installed, uninstall that version before installing the new version.

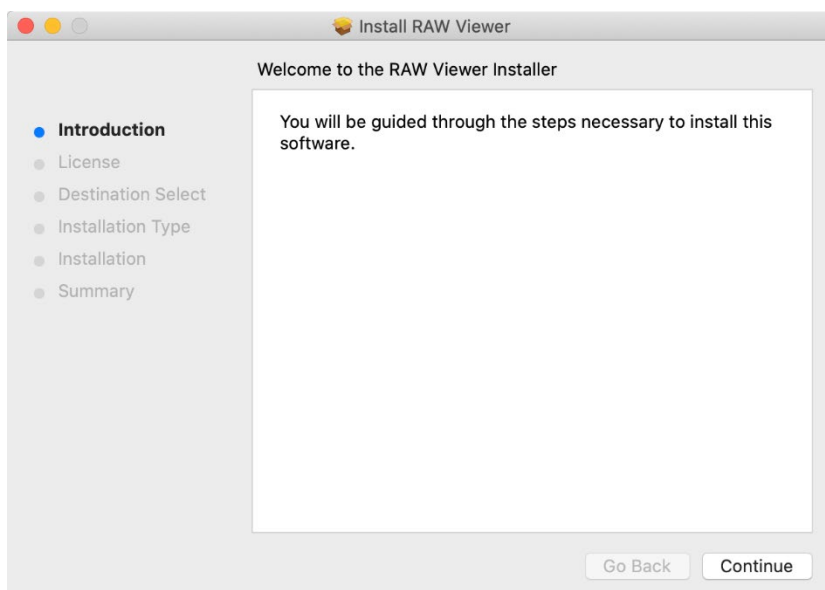
## Mac OS

---

- 1) Double click **RAW\_Viewer\_v\_r.dmg** ("v\_r" indicates the version and region).  
The **RAW\_Viewer.pkg** appears.



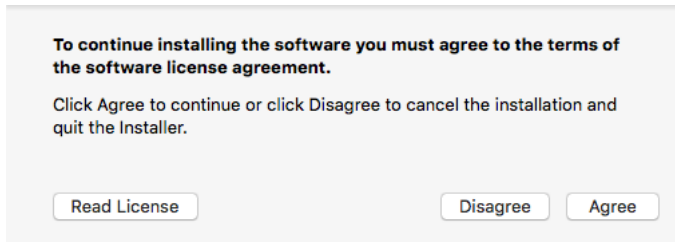
- 2) Double click the **RAW\_Viewer.pkg**.  
The installer screen appears.



- 3) Click the **[Continue]** button.  
A license agreement screen appears.

**4) Click the [Continue] button.**

**The following message appears.**



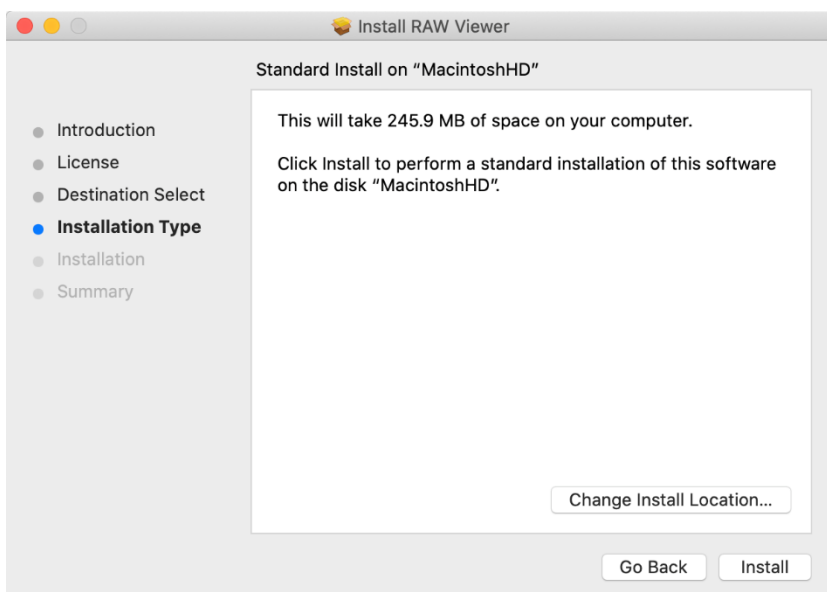
**5) Click the [Agree] button.**

**The installation destination select screen appears.**

**6) Click the installation destination volume.**

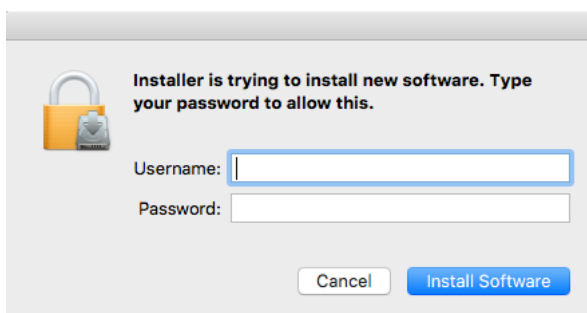
**7) Click the [Continue] button.**

**The following screen appears.**

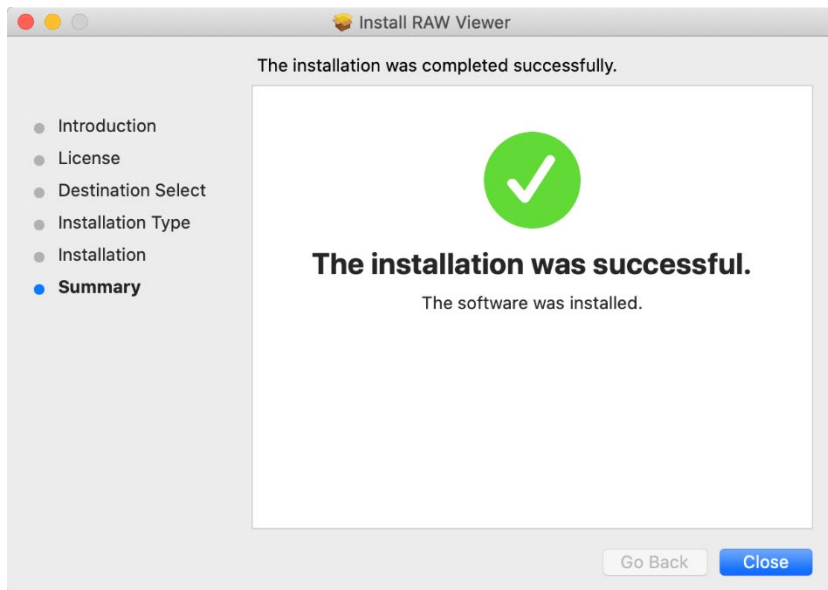


**8) Click the [Install] button.**

**An authentication screen appears.**



- 9) Enter your name and password, and then click the [Install Software] button.  
The following screen appears when the installation is complete.



If F65RAW Viewer is installed, you can continue to use the F65RAW Viewer settings.

- 10) Click the [Close] button to close the screen.

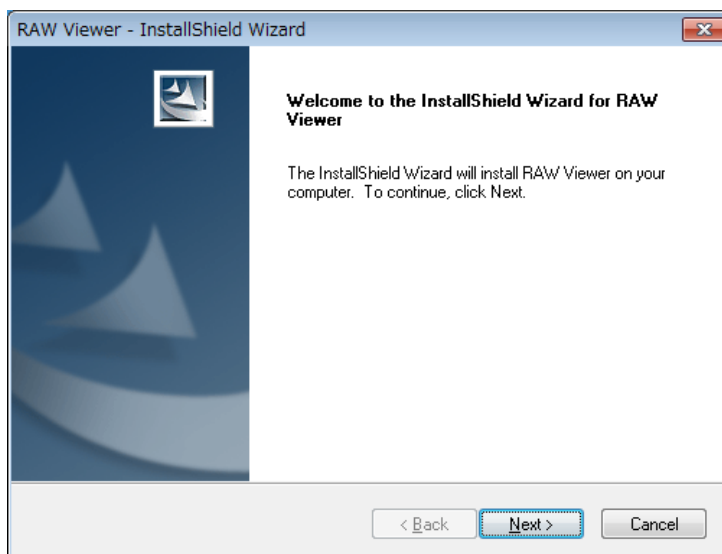
### To uninstall the application

Move the application icon to the Trash. The default application installation folder is /Applications/RAW Viewer.

## Windows

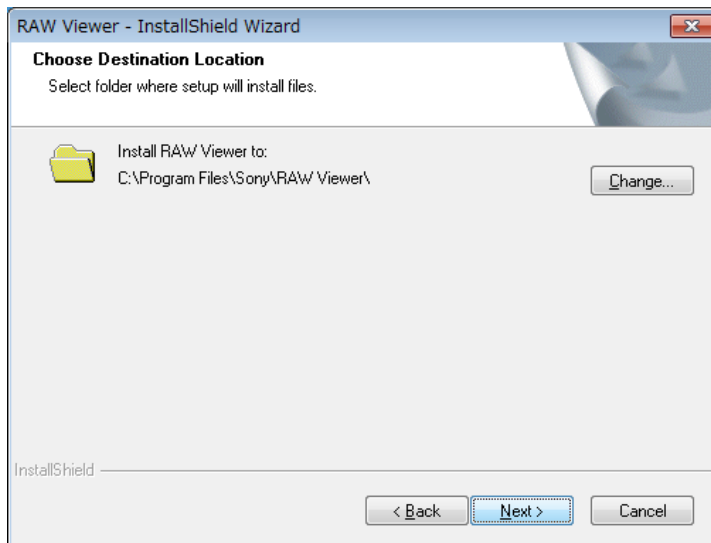
---

- 1) Double click RAW\_Viewer\_v\_r.exe ("v\_r" indicates the version and region).  
The setup wizard appears.



- 2) Click the [Next] button in the setup wizard.  
A license agreement screen appears.

- 3) Click the [Agree] button, and then click the [Next] button.  
The following screen appears.

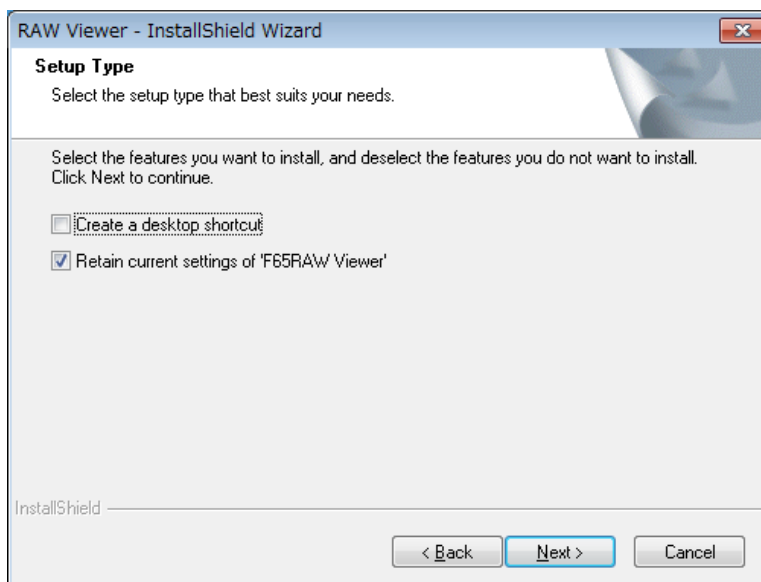


- 4) Change the settings as required, and then click the [Next] button.

#### To change the installation destination

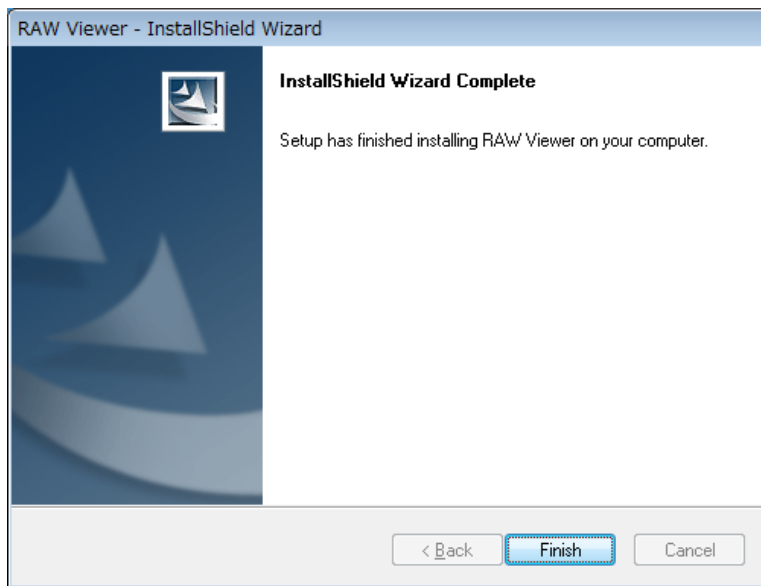
Click the [Change...] button to open a dialog. Select the folder in the dialog.

The following screen appears.



- 5) If you want to create a RAW Viewer shortcut on the desktop, place a check mark in the [Create a desktop shortcut] check box. If F65RAW Viewer is installed and you want to continue using the F65RAW Viewer settings, place a check mark in the [Retain current settings of 'F65RAW Viewer'] check box. Then, click the [Next] button.

The following screen appears when the installation is complete.



**6) Click the [Finish] button to close the dialog.**

#### **To uninstall the application**

Open the Programs and Features control panel, then select and uninstall [RAW Viewer] from the list of installed programs.



# Launching and Exiting the Application

## Launching the application

---

### Mac OS

Click the RAW Viewer icon in Launchpad. Or, double-click the RAW Viewer icon in the Applications folder using the Finder.

### Windows

Select the [Start] Menu > [All Programs] > [Sony RAW Viewer]. Or, double-click the [RAW Viewer] icon on the desktop.



Note: It is not possible to launch more than one instance of this application at one time.

The application creates a folder structure "Sony/RAW Viewer" in the Documents folder for storing setup information. You should also delete the Sony/RAW Viewer folder after uninstalling the application.

## Exiting the application

---

### Mac OS

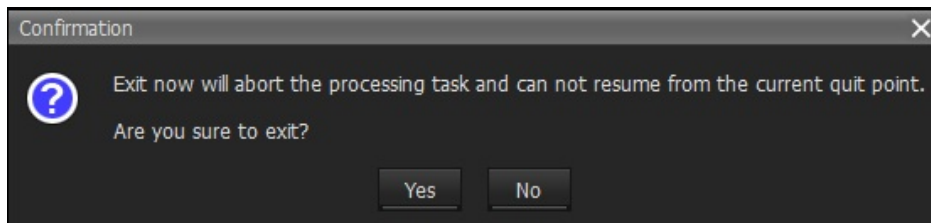
Select [Quit RAW Viewer] from the [RAW Viewer] menu.

### Windows

Select [Exit] from the [File] menu.



Note: If you exit the application while an export task is running, the following confirmation dialog appears. If you click the [Yes] button, the running task will be aborted and the application exits. The aborted task will be in the queued state when you next launch the application. By clicking the [Run] button in the Task Queue, you will be able to run the task from the beginning.



# Trademarks

- macOS Monterey, macOS Ventura, macOS Sonoma, iMac, Mac Pro, MacBook Pro, and Thunderbolt are trademarks of Apple Inc., registered in the U.S. and other countries.
- Windows is a registered trademark of Microsoft Corporation in the United States and other countries.
- Intel, Intel Quad Xeon, Intel Dual Quad Xeon, Core i7 and Xeon are trademarks or registered trademarks of Intel Corporation or its subsidiaries in the United States and other countries.
- Radeon is a trademark of Advanced Micro Devices, Inc.
- Nvidia GeForce is a trademark or registered trademark of NVIDIA Corporation in the United States and other countries.

All product names and brand names are registered trademarks or trademarks of their respective owners.